

~~PRIVATE~~ LAND CONSERVATION IN ILLINOIS

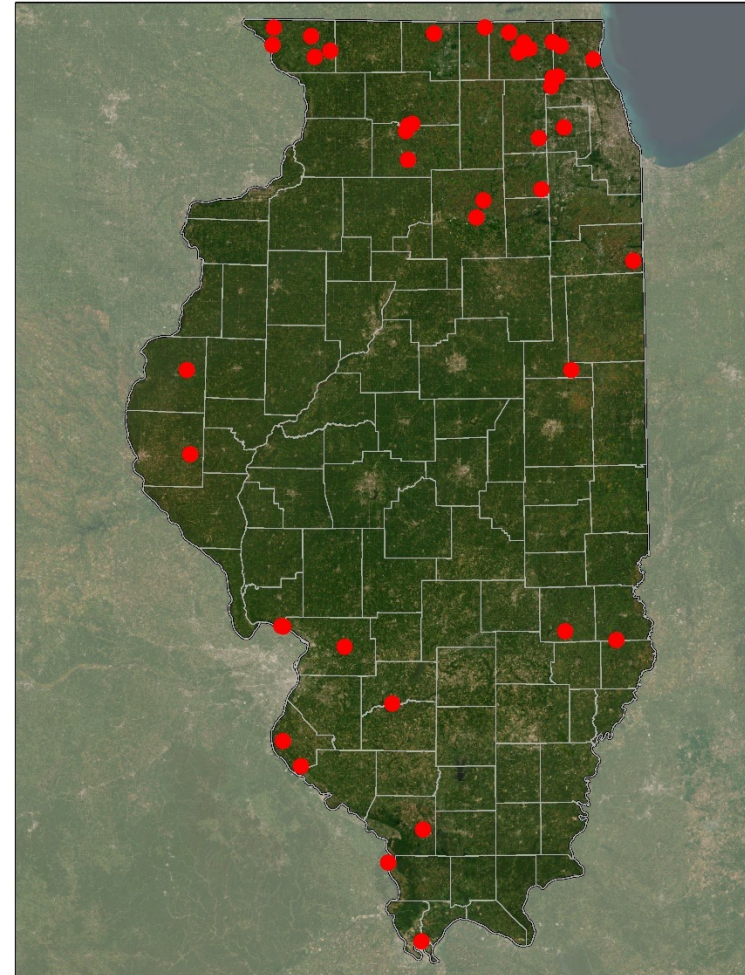
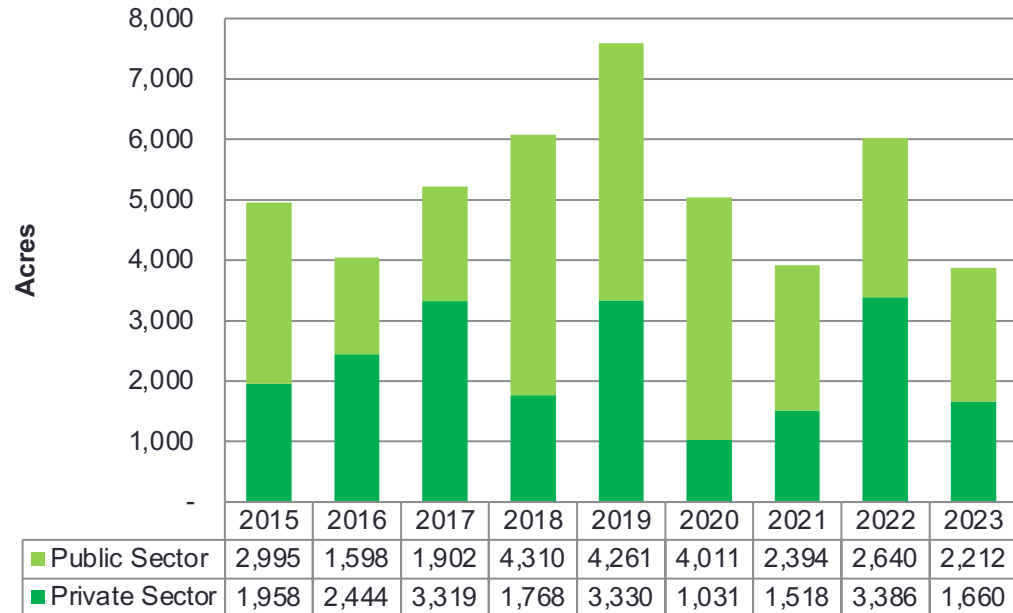
2023 YEAR IN REVIEW



Land Protection Projects - 2023

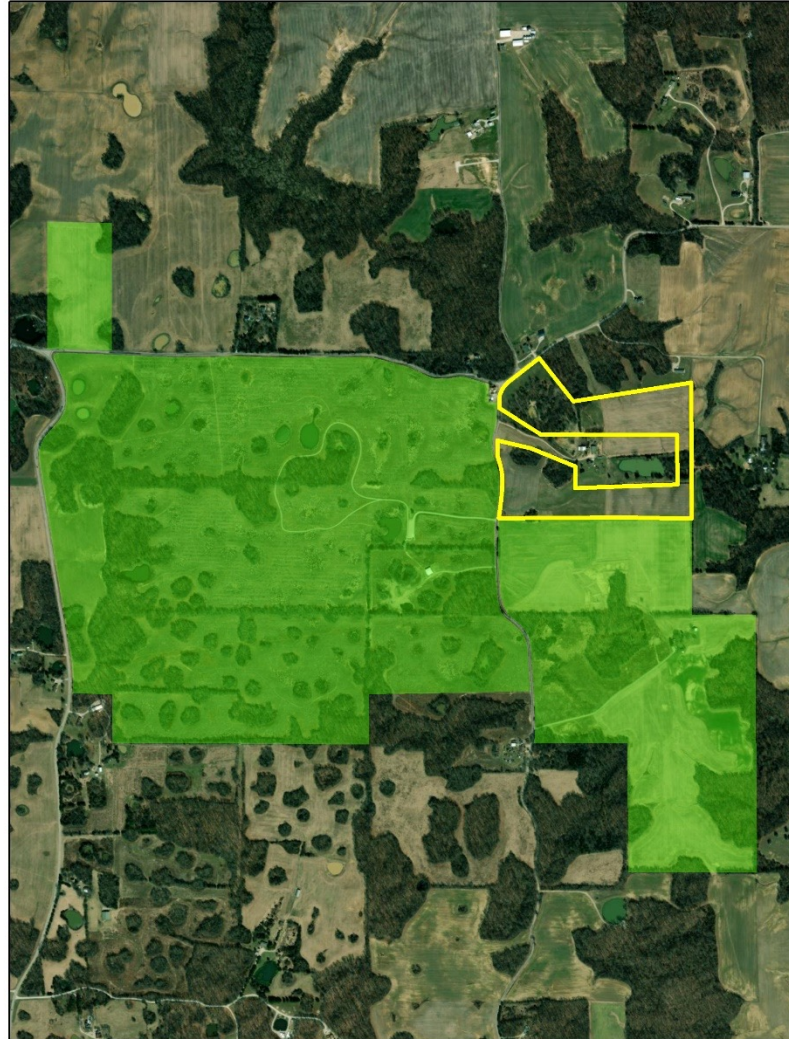
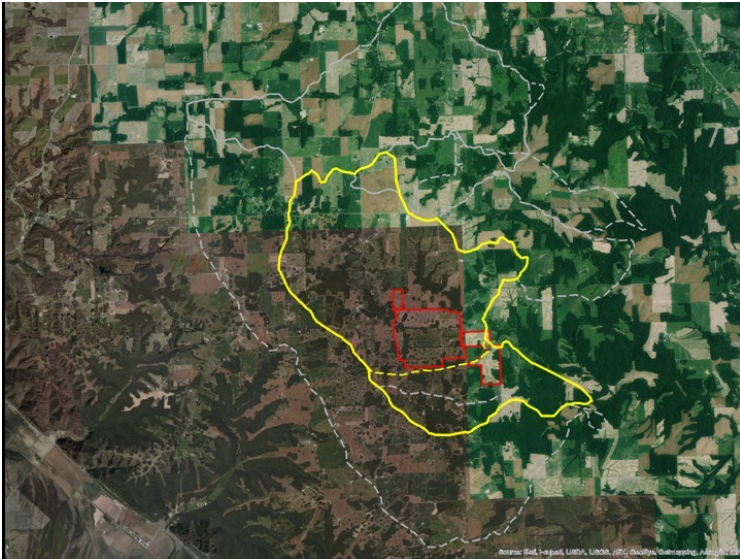
Projects by Size

| | |
|----------------|----|
| < 10 acres: | 22 |
| 10-50 acres: | 17 |
| 50-100 acres: | 10 |
| 100-150 acres: | 7 |
| 150+ acres: | 4 |



Alfred & Joanna Anesi Wildlife Sanctuary

- Illinois Audubon Society
- Monroe County
- 43.7 acres



- Protects Fogelpole Cave – largest karst cave in the state
 - Joins land owned by Clifftop and IDNR
- Overlies the cave's recharge area - i.e. the entire ecosystem
- Public/private tag team

Knoll Family Wildlife Refuge

- Heartlands Conservancy
- Madison County
- 41.3 acres



- Chorus frog!
 - On the cusp of being added to E&T list
 - Focus of original state Wildlife Action Plan
- Half mile north of existing protected chorus frog habitat
- Contains both sand prairie and sand savanna
- Bargain sale
- Lots and lots of partners

Trieber Forest Preserve

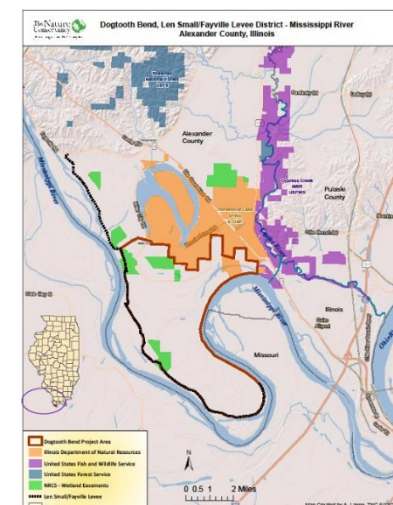
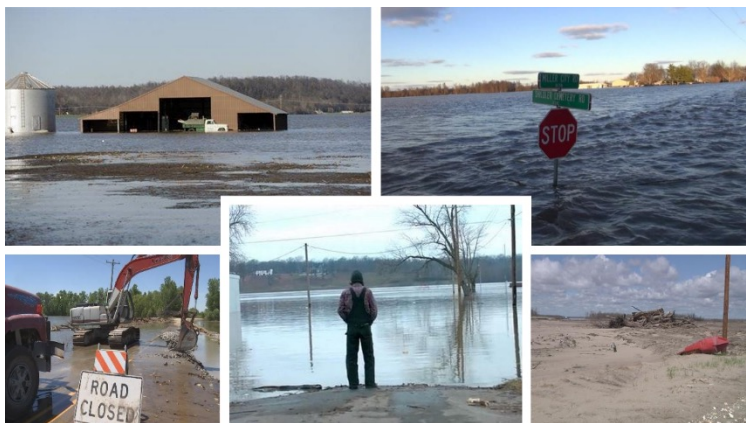
- Forest Preserve District of Kane County
- (I trust you can guess) County
- 6.7 acres



- Remnant old growth oak woodland
- Located at intersection of Gilberts and Elgin
 - Prime developable land
- Donated to the public

Dogtooth Bend

- Illinois Audubon Society
- Alexander County
- 80.4 acres



- Part of >14k acre project area
- Recurrent massive floods.
- NRCS purchases easements
- TNC to restore to bottomland habitat
- Potential future addition to USFWS Refuge

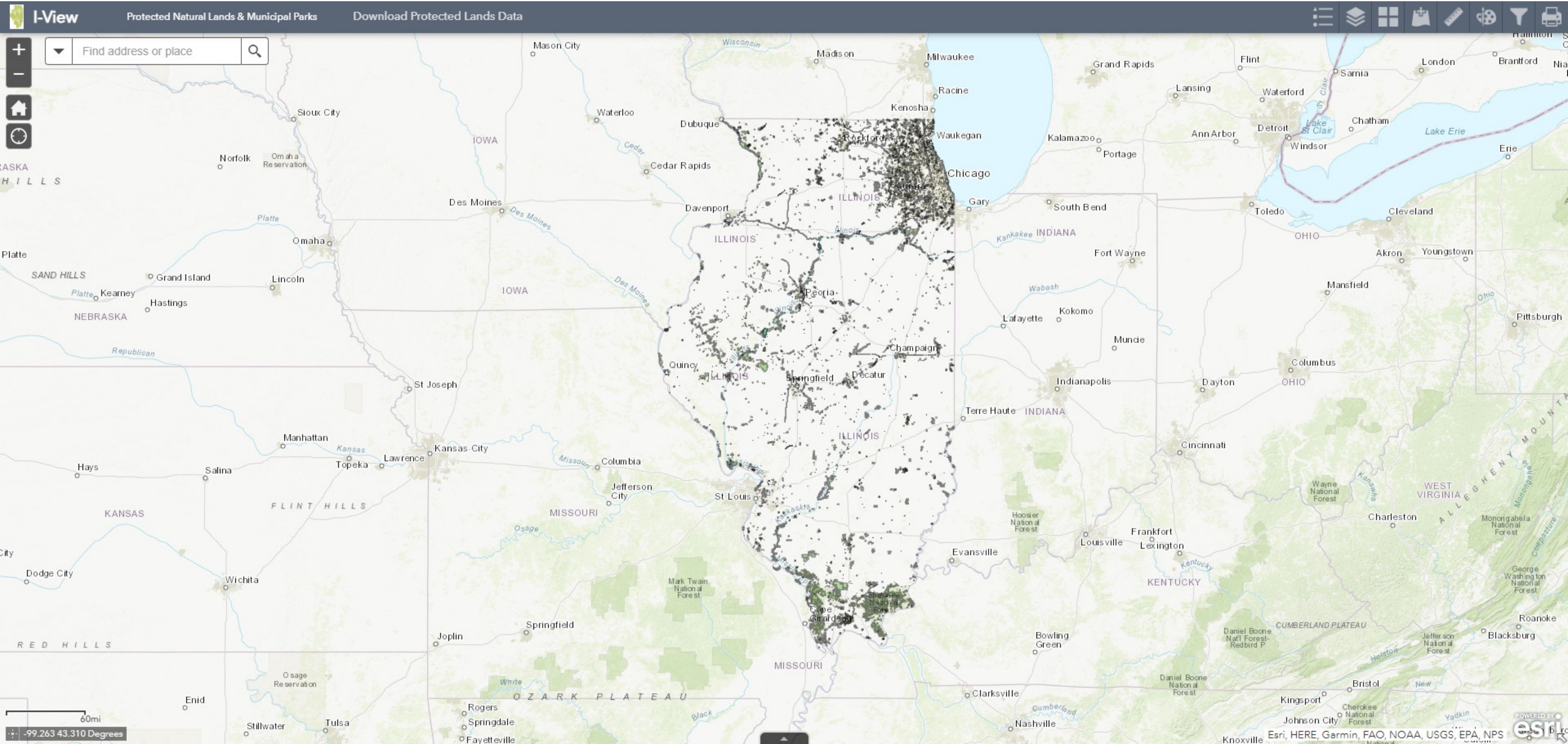
Illinois Beach State Park

- Illinois Department of Natural Resources
- Lake County
- 128.3 acres



- Multi-decade effort
 - Over 1,000 parcels
- Cuts through dedicated Illinois Nature Preserve
- Proposed site of water infrastructure snaking through the Park

I-View



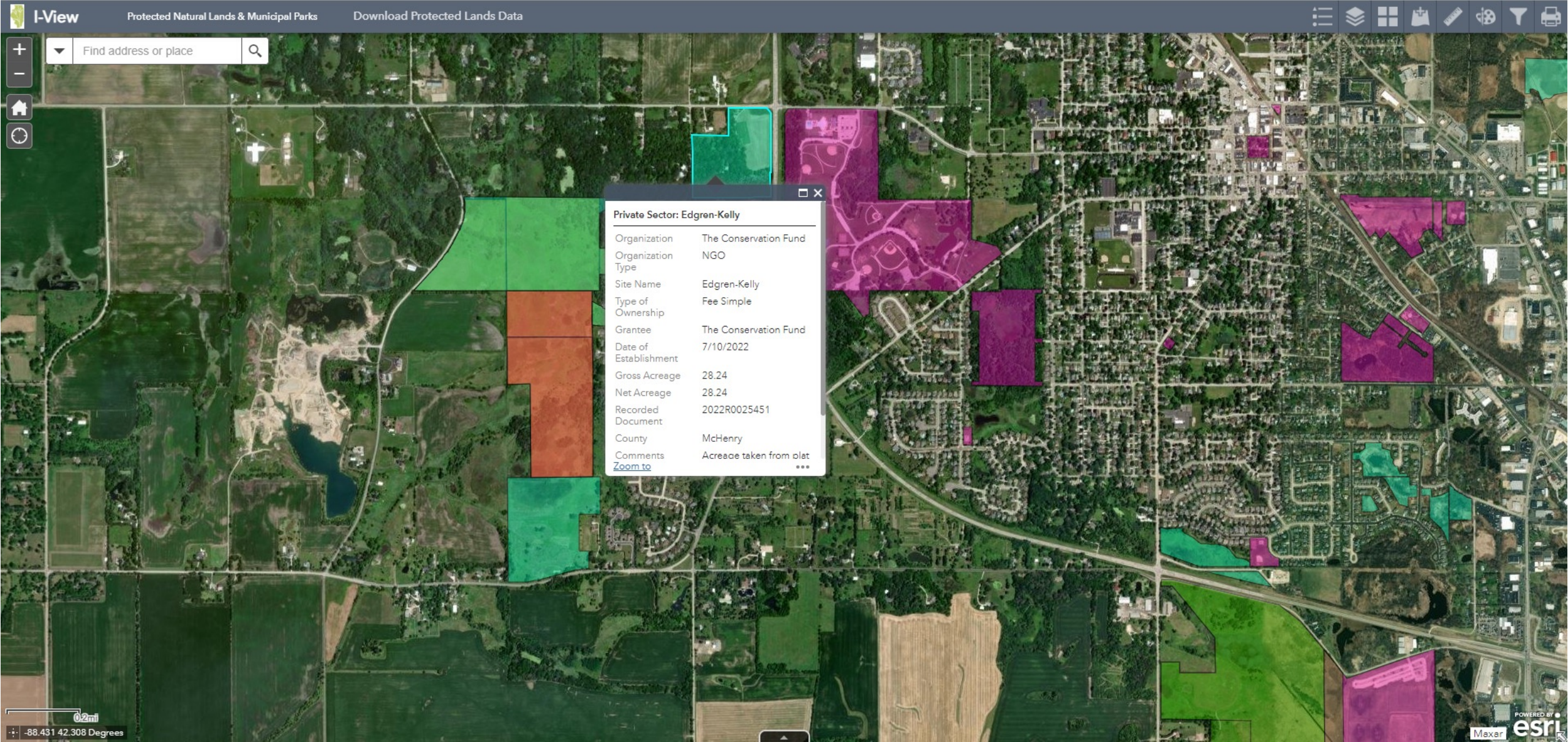


Everything to iPad

Printing

AirPlay

I-View



I-View

I-View Protected Natural Lands & Municipal Parks Download Protected Lands Data

Find address or place

Layer List

Layers

- Protected Natural Lands - Private Sector
- Protected Natural Lands - Public Sector
- Illinois Nature Preserves
- Municipal Parks
- Conservation Opportunity Areas
- Natural Divisions of Illinois
- 100 Year Floodplain
- Subbasins (HUC8)
- Watersheds (HUC10)
- Biologically Significant Streams
- Presettlement Vegetation
- Chicagoland Trails and Bikeways
- Illinois House Districts
- Illinois Senate Districts
- Illinois US Congressional District Boundaries
- Counties
- Conservation Easements - Private Sector
- Conservation Easements - Public Sector
- TNC Climate Resilience

0.2mi

-88.429 42.314 Degrees

I-View

I-View Protected Natural Lands & Municipal Parks Download Protected Lands Data

Find address or place

Area: 26.2 Acres
Perimeter: 4,024.1 Feet

Draw

Preview:

Color: [Color Picker]

Transparency: [Slider: 0% to 100%]

Outline color: [Color Picker]

Outline width: [Input: 2]

Show area measurement

Unit: Acres

Font color: [Color Picker]

Font size: [Input: 16]

Show perimeter measurement

Unit: Feet

Font color: [Color Picker]

Font size: [Input: 16]

Undo Redo Clear

The image shows a screenshot of the I-View web application. The main map area displays an aerial view of a landscape with several colored polygons overlaid. A prominent yellow polygon in the upper-middle section is labeled with its area (26.2 Acres) and perimeter (4,024.1 Feet). Other polygons in shades of green, orange, and purple are visible in the lower half of the map. The top navigation bar includes the application name, a search bar, and a link to download data. The right-hand side features a 'Draw' toolbar with various drawing tools (rectangle, circle, line, polygon, star, text) and a detailed configuration panel for the selected drawing tool. This panel includes a color palette, a transparency slider, and options for area and perimeter measurements, including unit selection and font styling. At the bottom of the draw panel are 'Undo', 'Redo', and 'Clear' buttons. The bottom left corner of the map shows a scale bar (0.2 miles) and geographic coordinates.

I-View

The screenshot displays the I-View web application interface. The main map area shows a satellite view of a landscape with several colored overlays: a large purple area on the right, a green area in the center, and an orange area at the bottom. The interface includes a search bar at the top left with the text "Find address or place" and a search icon. The top navigation bar contains the text "I-View", "Protected Natural Lands & Municipal Parks", and "Download Protected Lands Data". On the right side, there is an "Add Data" panel with a search bar and a list of data layers. The bottom left corner shows a scale bar for 0.2 miles and coordinates: -88.435 42.328 Degrees.

I-View Protected Natural Lands & Municipal Parks Download Protected Lands Data

Find address or place

Add Data

Search URL File

ArcGIS Online Search...

Within map... Type Relevance

- World Imagery (Wayback 2018-06-06)**
WMTS by esri_imagery
ADD DETAILS
- Terrain: Slope Map**
Image Service by esri
ADD DETAILS
- Sentinel-2 10m Land Use/Land Cover Ti...**
Image Service by esri_imagery
ADD DETAILS
- Terrain**
Image Service by esri
ADD DETAILS
- Sentinel-2 Views**
Image Service by esri
ADD DETAILS
- USA NAIP Imagery: Natural Color**
Image Service by esri
ADD DETAILS
- World Imagery (Wayback 2021-01-13)**
WMTS by esri_imagery
ADD DETAILS
- World Imagery (Wayback 2014-02-20)**
WMTS by esri_imagery
ADD DETAILS
- Terrain: Elevation Tinted Hillshade**
Image Service by esri
ADD DETAILS
- World Imagery (Wayback 2014-07-30)**

0.2mi
-88.435 42.328 Degrees

10,000 Items LAYERS



I'm out. You can
wake up now.



Yes, I am **still** reusing these photos each year. Want something different? Send me nicer photos.